

Haier

Ductless Mini and Multi-Split Quick Reference Guide



Quick Reference Guide Single-Zone Systems



Wall Mount



Operating Range

TE1VHA: Cooling: 14-115°F (-10-46°C) Heating: -4-75°F (-20-24°C)
 09/12TE2VHA: Cooling: -4-115°F (-40-46°C) Heating: -4-75°F (-20-24°C)
 18/24TE2VHA: Cooling: 0-115°F (-18-46°C) Heating: -4-75°F (-20-24°C)
 TE2HFA: Cooling: -40-115°F (-40-46°C) Heating: -4-75°F (-20-24°C)

Cooling operating range varies by model. Cooling operating below 23°F requires additional accessories.

Size	Indoor Model	Outdoor Model	AHRI#	Max Heat @ 5°F	SEER/EER/HSPF	Line Set: Liquid Suction	Min/Max Line Length	Max Fuse Size A	Min Circuit Amp	WiFi	Standard Controller	Optional Controller
9K	AW09TE1VHA	1U09TE1VHA	10191421	6,900	16/11/9	1/4"- 3/8"	10'/66'	20	18	WiFi	WJ01X24721*	QACT17A** YR-E16B** YR-E17**
12K	AW12TE1VHA	1U12TE1VHA	10191422	8,930	16/11/9	1/4"- 3/8"	10'/66'	20	18	WiFi		
9K	AW09TE2VHA	1U09TE2VHA	206551253	6,000	18/11/10	1/4"- 3/8"	10'/66'	15	12	WiFi		
12K	AW12TE2VHA	1U12TE2VHA	206551254	8,500	18/11/10	1/4"- 3/8"	10'/66'	15	12	WiFi		
18K	AW18TE2VHA	1U18TE2VHA	10191423	13,600	16/10/9	1/4"- 1/2"	10'/83'	20	17	WiFi		
24K	AW24TE2VHA	1U24TE2VHA	10191424	16,400	16/10/9	1/4"- 1/2"	10'/83'	25	19	WiFi	WJ01X24721*	QACT17A YR-E16B YR-E17
24K	AW24TL2HFA	1U24TL2HFA	207769097	24,000	20/11/10	3/8"-5/8"	10'/165'	40	30	WiFi		
30K	AW30TL2HFA	1U3036TL2HFA	207769098	24,800	18/9.5/9.5	3/8"-5/8"	10'/165'	40	30	WiFi		
36K	AW36TL2HFA	1U3036TL2HFA	207769099	24,600	17.5/8/9.5	3/8"-5/8"	10'/165'	40	30	WiFi		



Wall Mount



Operating Range

Cooling: 14-115°F (-10-46°C) Heating: -15-75°F (-26-24°C)

Size	Indoor Model	Outdoor Model	AHRI#	Max Heat @ 5°F	SEER/EER/HSPF	Line Set: Liquid Suction	Min/Max Line Length	Max Fuse Size A	Min Circuit Amp	WiFi	Standard Controller	Optional Controller
9K	AW09ES2VHB	1U09AP2VHA	202583709	10,000	23.5/14.5/10.5	1/4"- 3/8"	10'/50'	15	11	WiFi	WJ01X24721*	QACT17A** YR-E16B** YR-E17**
12K	AW12ES2VHB	1U12AP2VHA	202583711	13,000	23/12.5/11	1/4"- 3/8"	10'/50'	15	11	WiFi		
15K	AW15ES2VHB	1U15AP2VHA	202583712	16,000	21.5/12.5/10.5	1/4"- 1/2"	10'/83'	20	14	WiFi		
18K	AW18ES2VHB	1U18AP2VHA	202583710	17,000	21/12.5/10.5	1/4"- 1/2"	10'/83'	20	14	WiFi		
24K	AW24ES2VHB	1U24AP2VHA	202583713	20,000	20/12.5/10.5	1/4"- 1/2"	10'/83'	30	20	WiFi		



Wall Mount



Operating Range

Cooling: 14-115°F (-10-46°C) Heating: -31-75°F (-35-24°C)

Size	Indoor Model	Outdoor Model	AHRI#	Max Heat @ 5°F	SEER/EER/HSPF	Line Set: Liquid Suction	Min/Max Line Length	Max Fuse Size A	Min Circuit Amp	WiFi	Standard Controller	Optional Controller
9K	AW09EH2VHD	1U09EH2VHE	206445819	12,000	30/16.6/15.2	1/4"- 1/2"	10'/50'	15	13	WiFi	WJ26X27153*	QACT17A YR-E16B YR-E17
12K	AW12EH2VHD	1U12EH2VHE	206389351	17,000	27/15/13	1/4"- 1/2"	10'/50'	20	14	WiFi		
18K	AW18EH2VHD	1U18EH2VHE	206445820	20,000	23/13/12	1/4"- 1/2"	10'/83'	30	20	WiFi		



Wall Mount



Operating Range

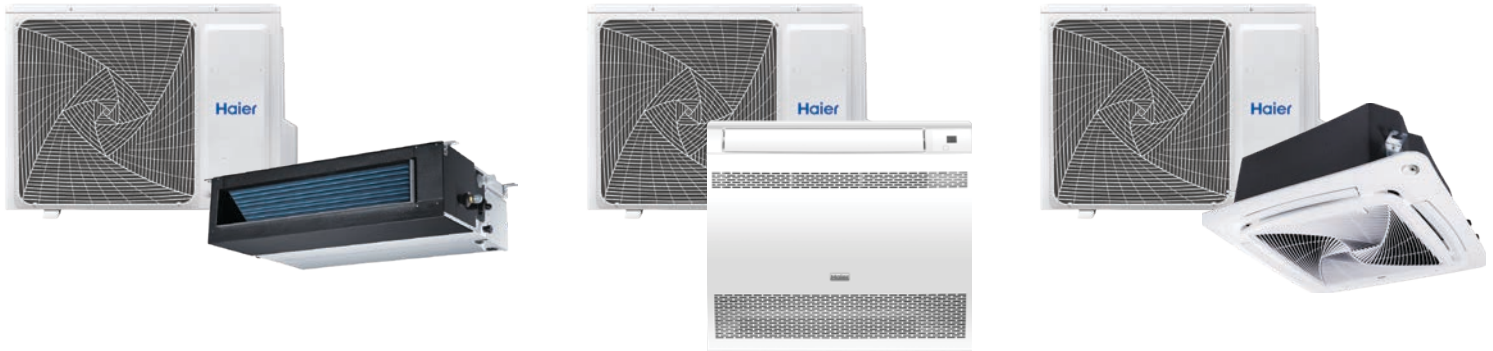
Cooling: 0-115°F (-18-46°C) Heating: -4-75°F (-20-24°C)

Size	Indoor Model	Outdoor Model	AHRI#	Max Heat @ 5°F	SEER/EER/HSPF	Line Set: Liquid Suction	Min/Max Line Length	Max Fuse Size A	Min Circuit Amp	WiFi	Standard Controller	Optional Controller
24K	AW24LP2VHA	1U24LP2VHA	10221212	20,030	17/10/10	3/8"- 5/8"	10'/165'	25	21	WiFi	WJ01X24721*	QACT17A** YR-E16B** YR-E17**
36K	AW36LP2VHA	1U36LP2VHA	10225937	28,880	17/8.6/10	3/8"- 5/8"	10'/165'	30	26	WiFi		

Built-in WiFi
 Adaptable with WiFi Adapter QAWF01A



*Remote controller is shipped with indoor unit.
 **Requires WK-B adapter.



Arctic Mid-Static Ducted



Operating Range												
Cooling: 14~115°F (-10~46°C) Heating: -31~75°F (-35~24°C)												
Size	Indoor Model	Outdoor Model	AHRI#	Max Heat @ 5°F	SEER/EER/HSPF	Line Set: Liquid Suction	Min/Max Line Length	Max Fuse Size A	Min Circuit Amp	WiFi	Standard Controller	Optional Controller
9K	USYM09UCDSA	1U09EH2VHE	206608650	10,000	21/12.5/11	1/4"- 3/8"†	10'/50'	15	13	WiFi	Wired controller must be purchased separately	QACT17A
12K	USYM12UCDSA	1U12EH2VHE	206389354	12,000	20/12.5/10.5	1/4"- 3/8"†	10'/50'	20	14	WiFi		YR-E16B
18K	USYM18UCDSA	1U18EH2VHE	206608651	19,000	19/11.5/10	1/4"- 1/2"	10'/83'	30	20	WiFi		YR-E17

Arctic Console



Operating Range												
Cooling: 14~115°F (-10~46°C) Heating: -31~75°F (-35~24°C)												
Size	Indoor Model	Outdoor Model	AHRI#	Max Heat @ 5°F	SEER/EER/HSPF	Line Set: Liquid Suction	Min/Max Line Length	Max Fuse Size A	Min Circuit Amp	WiFi	Standard Controller	Optional Controller
9K	USYF09UCDWA	1U09EH2VHE	206608652	9,000	20/11/10	1/4"- 3/8"†	10'/50'	15	13	WiFi	WJ01X24721*	QACT17A
12K	USYF12UCDWA	1U12EH2VHE	206389355	10,000	20/12.5/10	1/4"- 3/8"†	10'/50'	20	14	WiFi		YR-E16B
18K	USYF18UCDWA	1U18EH2VHE	206608653	15,000	18/10/9	1/4"- 1/2"	10'/83'	30	20	WiFi		YR-E17

Arctic Compact Cassette



Operating Range												
Cooling: 14~115°F (-10~46°C) Heating: -31~75°F (-35~24°C)												
Size	Indoor Model	Outdoor Model	AHRI#	Max Heat @ 5°F	SEER/EER/HSPF	Line Set: Liquid Suction	Min/Max Line Length	Max Fuse Size A	Min Circuit Amp	WiFi	Standard Controller	Optional Controller
9K	AB09SC2VHA	1U09EH2VHE	206445025	9,000	20/10.5/9	1/4"- 3/8"†	10'/50'	15	13	NA	WJ01X24721*	QACT17A
12K	AB12SC2VHA	1U12EH2VHE	206389356	11,000	20/12.5/10	1/4"- 3/8"†	10'/50'	20	14	NA		YR-E16B
18K	AB18SC2VHA	1U18EH2VHE	206445026	17,000	16/10.5/9	1/4"- 1/2"	10'/83'	30	20	NA		YR-E17

FlexFit Pro

Operating Range												
Cooling: 0~115°F (-18~46°C) Heating: -4~75°F (-20~24°C)												
Size	Indoor Model	Outdoor Model	AHRI#	Max Heat @ 5°F	SEER/EER/HSPF	Line Set: Liquid Suction	Min/Max Line Length	Max Fuse Size A	Min Circuit Amp	WiFi	Standard Controller	Optional Controller
Cassette 3' x 3'												
24K	AL24LP2VHA	1U24LP2VHA	10225933	16,520	17/11.5/10	3/8"- 5/8"	10'/165'	25	21	NA	YR-HBS01*	QACT17A
36K	AL36LP2VHA	1U36LP2VHA	10225936	21,050	17/10/10.3	3/8"- 5/8"	10'/165'	30	26	NA		YR-E16B
48K	AL48LP2VHA	1U48LP2VHA	10225938	32,380	17/10.5/10.5	3/8"- 5/8"	10'/230'	40	35	NA		YR-E17

PB-950KB grille required for Cassette. Condensate pump included.

High Static Ducted



24K	AM24LP2VHA	1U24LP2VHA	10225932	16,890	17/11/11	3/8"- 5/8"	10'/165'	25	21	NA	YR-E17*	QACT17A
36K	AM36LP2VHA	1U36LP2VHA	10225935	23,140	17/10/10.5	3/8"- 5/8"	10'/165'	30	26	NA		YR-E16B
48K	AM48LP2VHA	1U48LP2VHA	10225939	31,200	16.9/10/10	3/8"- 5/8"	10'/230'	40	35	NA		

WiFi Built-in WiFi
Adaptable with WiFi Adapter QAWF01A



†Use 1/2 x 3/8 suction line adapter shipped with outdoor unit
*Remote controller is shipped with indoor unit.
**Requires WK-B adapter.

Quick Reference Guide Multi-Zone Systems

Multi-Zone Outdoor Units



Operating Range									
Cooling: 14~115°F (-10~46°C) Heating: -15~75°F (-26~24°C)									
Size	Outdoor Model	Max Line All Comb.	Max Heat @ 5°F (Non Ducted)	SEER/EER/HSPF Non Ducted	SEER/EER/HSPF Ducted	AHRI#		Max Fuse Size A	Min Circuit Amp
						Non Ducted	Ducted		
20K	2U20EH2VHA	164'	23,500	17/12.5/10.5	15/10.5/9.6	202449649	204035453	25	15
24K	3U24EH2VHA	197'	24,000	18.5/12.5/10.5	15/10.5/9.3	202449650	204035454	25	16
36K	4U36EH2VHA	230'	36,000	20/12.5/10.5	17/10/10.5	204878399	205782852	40	30



Operating Range									
Cooling: 0~115°F (-18~46°C) Heating: -4~75°F (-20~24°C)									
Size	Outdoor Model	Max Line All Comb.	Max Heat @ 5°F (Non Ducted)	SEER/EER/HSPF Non Ducted	SEER/EER/HSPF Ducted	AHRI#		Max Fuse Size A	Min Circuit Amp
						Non Ducted	Ducted		
18K	2U18MS2VHB	98'	12,550	16/10.5/9	16/8.5/8.5	8067632	8067633	25	15
24K	3U24MS2VHB	197'	14,960	18/10/10	16/8.5/8.5	8067004	8067351	25	18
36K	4U36MS2VHB	230'	21,230	18/9/10	16/8.5/9	8066750	8066788	30	23

2022 New!



Operating Range									
Cooling: 0~115°F (-18~46°C) Heating: -4~75°F (-20~24°C)									
Size	Outdoor Model	Max Line All Comb.	Max Heat @ 5°F (Non Ducted)	SEER/EER/HSPF Non Ducted	SEER/EER/HSPF Ducted	AHRI#		Max Fuse Size A	Min Circuit Amp
						Non Ducted	Ducted		
18K	2U18MS2HDA	98'	13,700	20/12.5/11	18.0/11.5/9.4	207698996	207722661	30	19
24K	3U24MS2HDA	197'	13,900	21/12.5/10.5	16.0/11.0/9	207698998	207722662	30	22
36K	4U36MS2HDA	230'	22,000	18/9/10.5	15.6/8.8/9.3	207802647	207802648	30	26

Multi-Zone Indoor Units

Wall Mount

Size	Indoor Model	Line Set: Liquid Suction	WiFi	Standard Controller	Optional Controllers
7K	AW07LC2VHB	1/4" - 3/8"	WiFi	WJ01X24721*	QACT17A** YR-E16B** YR-E17**
9K	AW09LC2VHB	1/4" - 3/8"	WiFi		
12K	AW12LC2VHB	1/4" - 3/8"	WiFi		
18K	AW18LC2VHB	1/4" - 1/2"	WiFi		
24K	AW24LP2VHA1	3/8" - 5/8"	WiFi		
2022 New!	7K	AW07TC2HDA	1/4" - 3/8"	WJ01X24721*	QACT17A YR-E16B YR-E17
	9K	AW09TC2HDA	1/4" - 3/8"		
	12K	AW12TC2HDA	1/4" - 3/8"		
	18K	AW18TC2HDA	1/4" - 1/2"		
	24K	AW24TC2HDA	1/4" - 1/2"		

Console

Size	Indoor Model	Line Set: Liquid Suction	WiFi	Standard Controller	Optional Controllers
9K	USYF09UCDWA	1/4" - 3/8"	WiFi	WJ01X24721	QACT17A YR-E16B YR-E17
12K	USYF12UCDWA	1/4" - 3/8"	WiFi		
18K	USYF18UCDWA	1/4" - 1/2"	WiFi		

Mid-Static Duct

Size	Indoor Model	Line Set: Liquid Suction	WiFi	Standard Controller	Optional Controller
9K	USYM09UCDSA	1/4" - 3/8"	WiFi	Wired controller must be purchased separately	QACT17A YR-E16B YR-E17
12K	USYM12UCDSA	1/4" - 3/8"	WiFi		
18K	USYM18UCDSA	1/4" - 1/2"	WiFi		
24K	USYM24UCDSA	3/8" - 5/8"	WiFi		

Cassette 2' x 2'

Size	Indoor Model	Line Set: Liquid Suction	WiFi	Standard Controller	Optional Controllers
9K	AB09SC2VHA	1/4" - 3/8"	NA	WJ01X24721	QACT17A YR-E16B YR-E17
12K	AB12SC2VHA	1/4" - 3/8"	NA		
18K	AB18SC2VHA	1/4" - 1/2"	NA		

PB-700KB grille required (Must order separate). Condensate pump included.

Ducted

Size	Indoor Model	Line Set: Liquid Suction	WiFi	Standard Controller	Optional Controller
7K	AD07SL2VHB	1/4" - 3/8"	NA	YR-E17	QACT17A YR-E16B
9K	AD09SL2VHB	1/4" - 3/8"	NA		
12K	AD12SL2VHB	1/4" - 3/8"	NA		
18K	AD18SL2VHB	1/4" - 1/2"	NA		

Cassette 3' x 3'

Size	Indoor Model	Line Set: Liquid Suction	WiFi	Standard Controller	Optional Controller
24K	AL24LP2VHA	3/8" - 5/8"	NA	WJ01X24721*	QACT17A YR-E16B YR-E17

PB-950KB grille required (Must order separate). Condensate pump included.

High Static Duct

Size	Indoor Model	Line Set: Liquid Suction	WiFi	Standard Controller	Optional Controller
24K	AM24LP2VHA	3/8" - 5/8"	NA	YR-E17	QACT17A YR-E16B

Built-in WiFi
Adaptable with WiFi Adapter QAWF01A



*Remote controller is shipped with indoor unit.
**Requires WK-B adapter.

Multi-Zone Capacity Matrix



2U20EH2VHA
2U18MS2VHB
2U18MS2HDA

No adapter is shipped with 2U

	Combinations		Required Adapter
	Port B	Port A	
	1/4" x 3/8"	1/4" x 3/8"	
Two Zone	7	7	-
	9	7	-
	9	9	-
	12	7	-
	12	9	-
	12	12	-

3U24EH2VHA
3U24MS2VHB
3U24MS2HDA

3U24EH ships with adapter E
3U24MS ships with adapter D

	Combinations			Required Adapter	
	Port C	Port B	Port A	MS	EH
	MS: 1/4" x 3/8" EH: 1/4" x 1/2"	1/4" x 3/8"	1/4" x 3/8"		
Two Zone	7	7	---	-	E
	9	7	---	-	E
	9	9	---	-	E
	12	7	---	-	E
	12	9	---	-	E
	12	12	---	-	E
	18	7	---	D	-
	18	9	---	D	-
	18	12	---	D	-
Three Zone	7	7	7	-	E
	9	7	7	-	E
	9	9	7	-	E
	12	7	7	-	E
	9	9	9	-	E
	12	9	7	-	E
	12	9	9	-	E
	12	12	7	-	E
	18	7	7	D	-
12	12	9	-	E	

4U36EH2VHA
4U36MS2VHB
4U36MS2HDA

4U36EH ships with adapters A, C, D, E
4U36MS ships with adapters D, E

	Combinations				Required Adapter
	Port D	Port C	Port B	Port A	
	1/4" x 1/2"	1/4" x 3/8"	1/4" x 3/8"	1/4" x 3/8"	
Two Zone	18	9	---	---	-
	18	12	---	---	-
	24	7	---	---	C, A
	24	9	---	---	C, A
	24	12	---	---	C, A
	18	18	---	---	D
	18	24	---	---	A, B
	24	24	---	---	B, C, A, A
	Three Zone	9	9	9	---
12		9	7	---	E
12		9	9	---	E
12		12	7	---	E
18		7	7	---	-
12		12	9	---	E
18		9	7	---	-
18		9	9	---	-
12		12	12	---	E
18		12	7	---	-
24		7	7	---	C, A
18		12	9	---	-
24		9	7	---	C, A
24		9	9	---	C, A
18		12	12	---	-
24		12	7	---	C, A
24		12	9	---	C, A
24		12	12	---	C, A
Four Zone	18	18	12	---	D
	7	7	7	7	E
	9	7	7	7	E
	9	9	7	7	E
	12	7	7	7	E
	9	9	9	7	E
	12	9	7	7	E
	9	9	9	9	E
	12	9	9	7	E
	12	12	7	7	E
	12	9	9	9	E
	18	7	7	7	-
	12	12	9	7	E
	18	9	7	7	-
	12	12	9	9	E
	12	12	12	7	E
	18	9	9	7	-
	18	12	7	7	-
24	7	7	7	C, A	
12	12	12	9	E	
24	9	7	7	C, A	
12	12	12	12	E	
18	12	9	9	-	



Adapters

		GEA Part #
A	1/4" to 3/8" (Liquid line for ports C & D)	WJ01X23925
B	3/8" to 5/8" (Vapor line for port C)	WJ01X23924
C	1/2" to 5/8" (Vapor line for port D)	WJ01X23932
D	3/8" to 1/2" (Vapor line for port C)	WJ01X26853
E	1/2" to 3/8" (Vapor line for port C or D)	WJ01X26854



Controllers

Wireless Infrared Hand-Held Controllers				Wall Mounted Wired Controllers			WiFi Adapter	
WJ26X27153 (YR-HQ)	WJ01X24721 (YR-HG)	YR-HBS01	UCT30RWA (COOL ONLY)	YR-E17	YR-E16B	QACT17A	WK-B (Wired controller interface kit)	QAWF01A

Front Wind Baffles and Side and Back Wind Baffles (Snow Hoods)

	Outdoor Units																													
	TEMPO							ADVANCED PLUS				ARCTIC			FLEXFIT PRO		ARCTIC MULTI		FLEXFIT MULTI											
	1U09TE1VHA	1U12TE1VHA	1U09TE2VHA	1U12TE2VHA	1U18TE2VHA	1U24TE2VHA	1U24TL2HFA	1U3036TL2HFA	1U09AP2VHA	1U12AP2VHA	1U15AP2VHA	1U18AP2VHA	1U24AP2VHA	1U09EH2VHE	1U12EH2VHE	1U18EH2VHE	1U24LP2VHA	1U36LP2VHA	1U48LP2VHA	2U20EH2VHA	3U24EH2VHA	4U36EH2VHA	2U18MS2VHB	3U24MS2VHB	4U36MS2VHB	2U18MS2HDA	3U24MS2HDA	4U36MS2HDA		
Front Wind Baffle																														
	QAWB37A																													
	QAWB38A																													
	QAWB40A																													
	QAWB41A																													
	QAWB42A																													
	QAWB43A																													
	QAWB44A																													
	QAWB45A																													
	UAWB46A																													
	UAWB47A																													
Side And Back Wind Baffle (Snow Hood)																														
	UAWB80A																													
	UAWB81A																													
	UAWB82A																													
	UAWB83A																													
	UAWB84A																													

*Requires 2 wind baffles

Cassette Panels



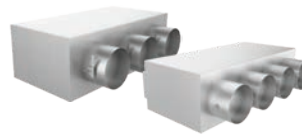
Indoor Model	Panel
AB09SC2VHA	PB-700KB
AB12SC2VHA	
AB18SC2VHA	
AL24LP2VHA	PB-950KB
AL36LP2VHA	
AL48LP2VHA	

Return & Supply Air Grilles



Indoor Model	Grille
AD07SL2VHB	PAD0890RA
AD09SL2VHB	
AD12SL2VHB	
AD18SL2VHB	PAD1210RA
AD07SL2VHB	PAD0890SA
AD09SL2VHB	
AD12SL2VHB	
AD18SL2VHB	PAD1210SA

Supply Plenums



Indoor Model	Plenum
USYM09UCDSA	UAPT0912A
USYM12UCDSA	
USYM18UCDSA	UAPT1824A
USYM24UCDSA	

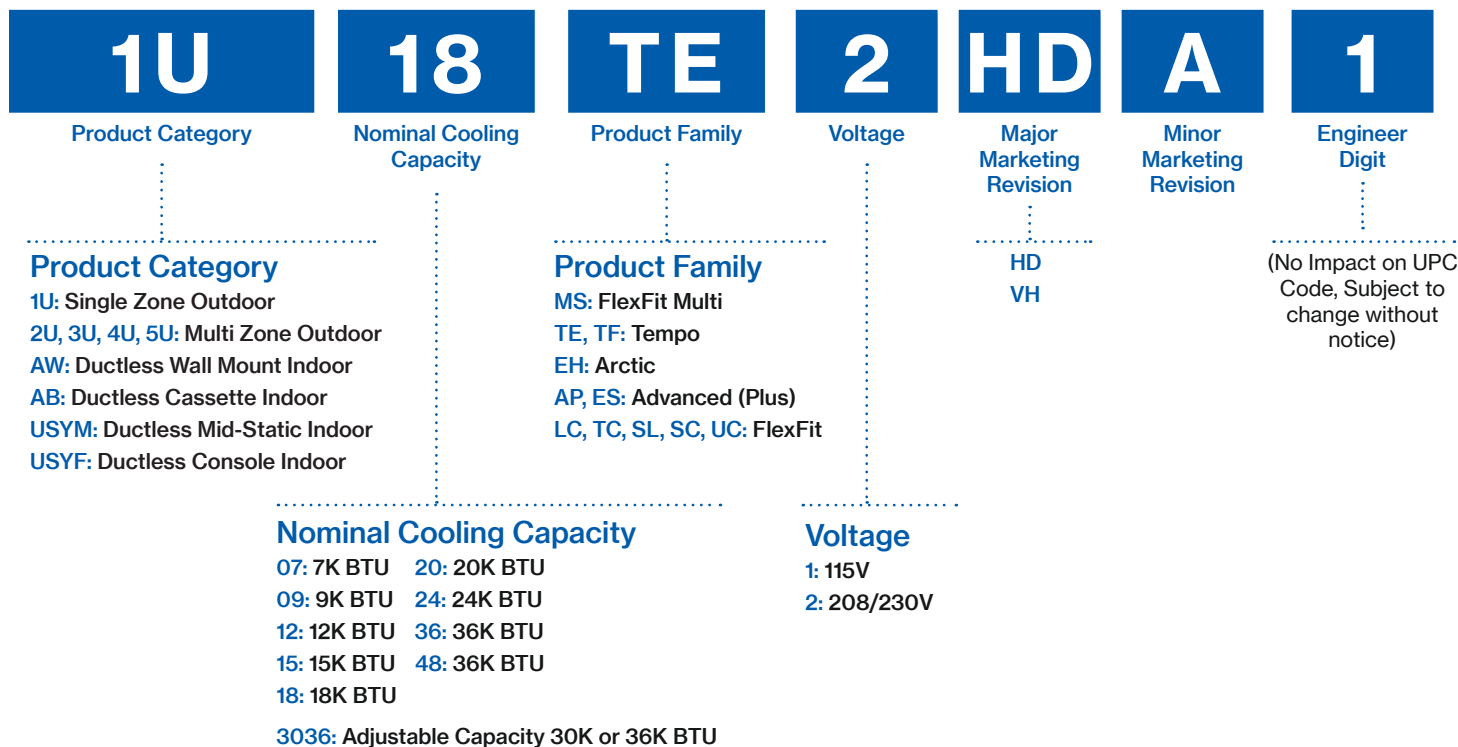
MERV Return Air Filter Boxes



Indoor Model	Filter Box
USYM09UCDSA	UAMFB0912A
USYM12UCDSA	
USYM18UCDSA	UAMFB1824A
USYM24UCDSA	

Quick Reference Guide Model Nomenclature

Haier



Limited Warranty

At Haier we take pride in our workmanship, which is why we offer one of the best warranties in the industry. Standard coverage is a 7-year limited warranty on the compressor and a 5-year limited warranty on parts. Our Tempo, Advanced, Advanced Plus, Arctic and all FlexFit Series systems qualify for a 10-year limited warranty on both the compressor and parts. Equipment must be registered for this extended coverage within 60 days of installation. To register your equipment go to: www.haierductless.com > support > product registration.

Training

We're with you every step of the way, from theory to application. Through the Haier HVAC Training Center, we teach distributors and contractors everything from service to installation to sales. For those who prefer to learn in the field, our Regional Training Program matches professionals with experienced trainers.

Support

You can always rely on Haier to guide you through warranty processing, parts ordering, product installation, technical documentation and more.



Rebates

With their high SEER and EER ratings, Haier ductless systems could earn your customers very attractive rebates.

Learn more by visiting:

ENERGY STAR energystar.gov

Database of State Incentives for Renewables & Efficiency dsireusa.org



GE APPLIANCES
a Haier company